



Dendrochilum magnum 'Royale' - Peter & Jane D'Olier

Dendrochilum magnum – commonly called the large *Dendrochilum* & you can see why! Endemic to the Philippines it grows in mossy forests at elevations of 1600 - 2000m.

What an elegant specimen this plant matures into when grown well, as it is by both Peter & Jane and Lee. The 50cm inflorescence has a majestic presentation with a straight stem and a gently cascading 'tail' covered in many 1.5cm flowers which apparently have a sweet wheaty/spicy fragrance. The pseudobulbs can reach 25cm with leaves also to 25cm.

In general, these plants do not tolerate root damage, so during repotting they should be handled very gently. [IOSPE travaldo.blogspot](http://IOSPE.travaldo.blogspot)



Ddc. magnum
'Golden Rod'
Lee Payne



← *Oberonia crateriformis*

Peter & Jane D'Olier.

Commonly referred to as the Cratered Fairy orchid (in reference to the crater-like depression on the lip). Found in north-eastern Queensland from Mount Misery to Eungella from sea-level to 700 m. Described by DL Jones & MA Clem in 2006. A mini-miniature sized hot to warm growing epiphyte or lithophyte. With an inflorescence of 5 – 15cm long with numerous whorls of 8 to 10 dainty 1.5mm flowers. IOSPE



Trachoma stellatum
P & J D'Olier

*FS 8 – 9mm

(Syn. *Trichoglossum stellatum*)



Blc. Toshie Aoki



Blc. Erin Kobayashi



Sc. Mem. Edna Gooseteny



Lc. Mari's Song x Sc. Beaufort

Aerides houlletiana. This is a medium to large sized, hot to warm growing species from Thailand, Vietnam & Cambodia. It grows in evergreen, semi-deciduous & deciduous, dry lowland forests from sea-level to 700 meters. The pendulous inflorescence can reach 40cm long & carry 12 to 20 flowers ranging from 1.9 to 2.5cm. The flowers are reportedly quite fragrant with a scent of citrus & spice.

The plant is Vanda like in appearance with a single stem covered with tightly packed opposing leaves that fan out in a single plane 15 – 20cm long, 5cm wide.

These are best grown in hanging baskets in free draining media or mounted. [IOSPE](#)



Lycaste aromatica x deppei



Den. Candy Stripe x Den. phalaenopsis



Sc. Lana Coryell



Brasavola nodosa

Oncidium harrisonianum (syn. *Oncidium auricula*). What an amazing display! Not that it looks like it based



on the explosion of flowers but this is listed as a miniature to small sized lithophytic or epiphytic cold to cool growing species, the smallest of the 'mule-eared' *Oncidium*s. Obviously no one told T&P's plant it might be a miniature! KOS' benching guidelines classify a miniature orchid as one with a flower width of 12mm or less and a raceme that does not exceed 200mm.



The plant pictured had flowers ~1.6cm with racemes up to 30cm so it would not have been benching as a miniature. T&P have clearly found a very happy place for their spectacular specimen!

IOSPE reports a flower size of 5-6mm whereas OrchidWiz says flowers are 1.6cm, both sources report racemes can be between 12.5 to 30cm long, branched at the base, with up to 40 flowers. The pseudobulbs are 1.7 – 2.5cm tall & almost as wide & range from elliptical to almost round with a prominent ridge on either side. Leaves are usually about 6.5cm but can be up to 15cm long & are covered with minute gray spots.

Originating in Brazil in São Paulo, Rio de Janeiro, Espírito Santo, and Minas Gerais, seldom found outside the elevation band of 1000-1100 meters on moss covered tree trunks in forests, near streams. IOSPE OrchidWiz



Trichocentrum Windward Beauty. There are 33 epiphytic species of *Trichocentrum* found from Mexico to southern Brazil. *Trichocentrum*'s major distinction from other *Oncidiinae* is the floral spur which is part of the lip and not an extension of the column as in other *Oncidiinae*. IOSPE



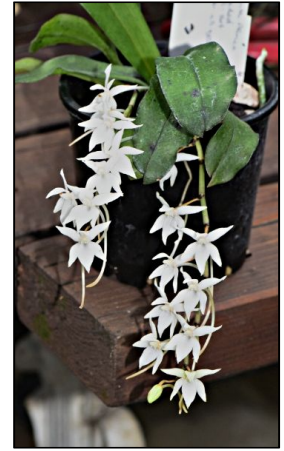
Dendrobium Samarai



Vascostylis Alice's Anie



Spathoglottis longifolia



Aerangis mystacidii



Diplocaulobium regale - morning

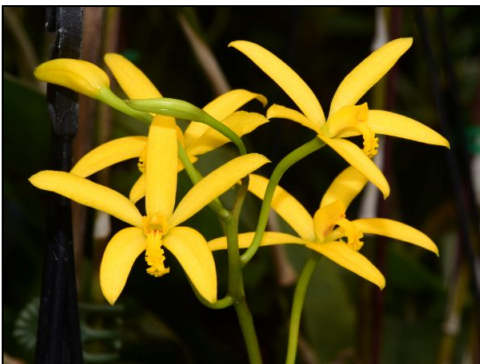


Diplocaulobium regale - afternoon

← the difference in colour & shape of this short lived flower is shown at either end of the day
Thanks Jane!



Phalaenopsis mentawaiensis



Laelia gloedeniana



Dendrobium mutabile



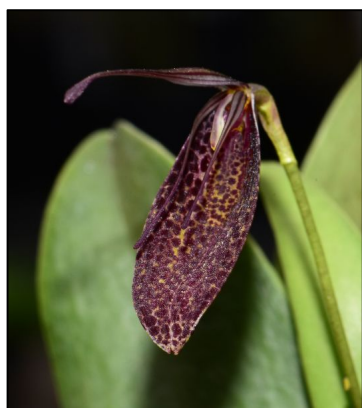
Bulb. exiguum *FS 1.25cm



Dendrobium cumulatum 'Pink'



Zga. Freestyle Meadows 'Tiya' x Holdfast Bay 'Meadow Mist'



Restrepia guttulata 'Hoffmann'
P&J D'Olier *species FS 1.75 – 5cm



Coelogyne speciosa 'Aurea'
Peter & Jane D'Olier



Restrepia trichoglossa
Peter & Jane D'Olier *FS 3cm



Cattleya Chocolate Drop
'Kodama' - Lina Huang



Ascda Lenakamolpun x *Ascda Vilas*
Lina Huang



Guaricattonia Dash of Brandy
'Gem' - Lina Huang



Cattleya Fitz Eugene Dixon
Lee Payne



Cattleya Fitz Eugene Dixon
Lina Huang



Ascda Jakkrit Gold x
V. Patcharee Delight - Lina Huang



Bulb. dearii - Jim Brydie



Phal. tetraspis - Jim Brydie



Galeandra lacustris - Jim Brydie



With apologies to Lee – I swapped the names of two of her beauties last month. Jim featured Mahina in the bulletin but I thought I would show them both with their correct names in case anyone added them to a wish list.



Rlc. Mahina Yahiro – Lee Payne

Rlc. Swan's Song – Lee Payne

Kitt Reyes

Dendrobium trantuanii Another intriguing & beautiful orchid grown by Gowan Stewart. This is the first time



this little cutie has flowered for Gowan who describes it as “a delightful small growing orchid with flowers like shiny plastic. It comes from Vietnam.”

Perusing the internet for more info on this little gem, the plant itself, as well as the flower make it fascinating. Dendrobiums come in all shapes & sizes & the pseudobulbs can be a key distinguishing feature as Jim has explained in previous bulletins in relation to the Callista Dendrobiums. *Den. Trantuanii* has a really flat pseudobulb with each segment pinching in at either end producing a very characteristic undulating shape. I have never seen a ‘flat’ pseudobulb like this but I came across a couple of others on the internet



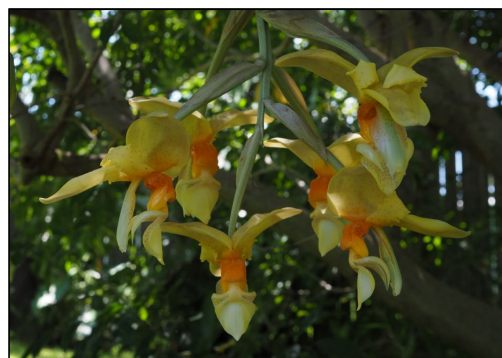
including *Den. platycaulon* commonly known as ‘Flat Pseudobulb



Dendrobium’ sometimes listed as a synonym of *Den. platigastrium* & slightly less flattened *Den. linawianum*. I have included a photo to the right from the [newworldorchids](http://newworldorchids.com) site of a more mature *Den. trantuanii* which shows the fanning growth habit & shape of multiple pseudobulbs.



With what is described as a slight peppery perfume, the 4 – 5cm flowers have very substantive, waxy, pastel pinkish coloured petals & sepals with an almost metallic sheen providing a striking contrast to the rich, luxurious textures & colours of the lip which looks like a deep pile velvet with a shiny strip in the centre. A feast for the senses of the pollinator! In its native environment it is found in evergreen forests at elevations of 800 to 1000 meters as a small, warm growing epiphyte. [IOSPE](http://IOSPE.com)



Stanhopea gravolens x 2– Jenny Richardson

Gorgeous colourful blooms from the garden of [Lina Huang](#)



Wilsonara Tan Treasures 'Brown Sugar'



Phalaenopsis Unknown



Miltassia Charles M. Fitch 'Izumi'



Oncidium Heaven Scent 'Rainbow'



Onc. Everglades Elegance 'Nancy Lee'



← *Haraella retrocalla* What an absolute little cutie this is, with 1.5-2cm flowers this miniature sized epiphytic species is native to Taiwan & grows in ancient forests. [IOSPE](#) reports these can be found at elevations of 1000 to 2200 meters whereas [OrchidWiz](#) states 500-1500m. Considering the size of the plant the flowers are relatively large & each inflorescence can have up to 4 citrusy scented flowers but only 2 in bloom at a time. [Lina's](#) bloom is ~2cm.

Miltoniopsis Amber's Cream 'Cream Puff' →

Miltoniopsis often present with very distinctive patterning but the clarity in this one is simply stunning - gorgeous Lina!



Miltonia Queen Ann



Cymbidium dayanum



Nestled in the leaves of a Star Jasmine

Epidendrum x 3 – **Jenny Richardson** Commonly called the crucifix orchid, the orange plant is the common rambling form of this reed stemmed *Epidendrum* with canes over a meter long & inflorescences 55-60cm & flowers 3.1cm. Lovely, vibrant, long lasting pops of colour in the garden but a rather a messy looking plant. The purple plant is much more compact with canes ~35cm & inflorescences of 25 – 30cm, flowers 1.9 cm. There are 6 spikes on it which have flowered sequentially, one fades & another blooms so it has been in flower for over 6 months.

There are 1659 known species of *Epidendrum* including terrestrial, lithophytic & epiphytic species so you need to check where a plant originates & it's native habitat to get the culture correct. *Epi. secundum* grows easily in Sydney, reliably producing cute little pom-poms of flowers that last for ages but beware - Dendrobium beetles seem to find them particularly tasty! There are many beautiful hybrids available with more compact plants & much larger flowers.



Lc. Susan Holcombe 'Yellow & Red'
Jenny Richardson



C. Pink Spice 'Mystery' x Rlc. Burdekin Bells 'Mary'
Jenny Richardson



Phalaenopsis Spica
Kitt Reyes



Miltonia Goodale Moir
'Golden Wonder' - **Jenny Richardson**

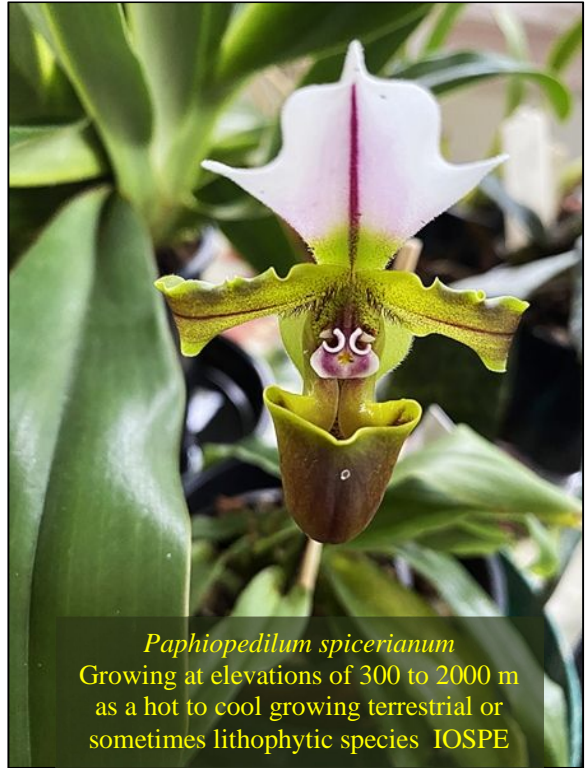


Galeopetalum Arlene Armour
'Conching' - **Kitt Reyes**

An alluring selection from the garden of Lee Payne



← This gorgeous plant is labelled *Paph. Honey* however, based on the colouring & shape it has been suggested it may be *Paph. Transvaal* or *Paph. Vanguard*. A stunning & well grown flower regardless of what you call it!



Paphiopedilum spicerianum
Growing at elevations of 300 to 2000 m
as a hot to cool growing terrestrial or
sometimes lithophytic species IOSPE



Diplodinium truncatum

(RHS Kew accepted name
Pterostylis truncata)
Wildlife tipped the pot over,
hand picked the bulbs, yet
there are an additional four
growing LP



Maxillaria triloris
1 flower opened and 8+
flower buds
*FS 11.25 cm



Cymbidium Erythrostylis - first
time blooming with two flower
spikes, just opened. I believe there
are spots within the labellum but
its not showing at the moment LP



*Oncidium Sharry
Baby 'Sweet
Fragrance'*



Lc. Angel Heart 'Hihimanu'



Phalaenopsis equestris x 2 *FS 1.5 – 3cm



C. Loddigesii 'Impassionata'

A beautiful array of blooms from the home of [DL](#)



Stanhopea graveolens



Cattleya Hawaiian Wedding Song



Dendrobium tongii



Dendrobium Kuniko



Miltonia moreliana 'Big Ben'



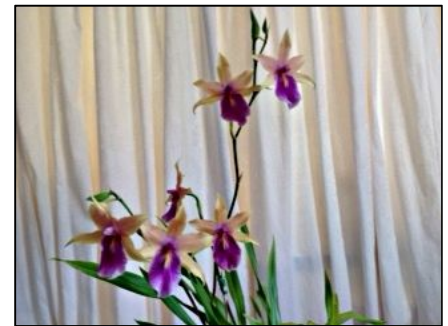
Isochilus linearis



Dendrobium regium



Cattleya Caudabec Candy



Miltonia regnellii (hybrid?)



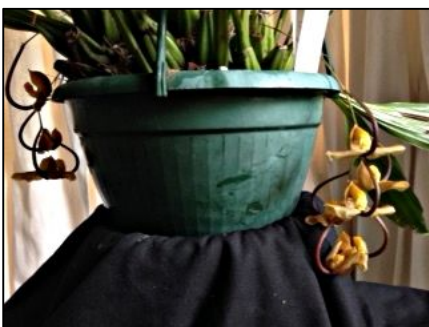
Onc. Sharry Baby 'Sweet Fragrance'



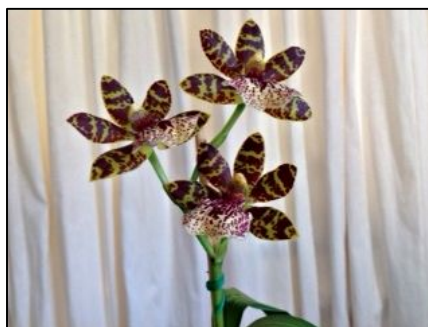
Gomesa crispa



Brassia Rex



Gongora galeata



Pptm. Kiwi Leopard 'Spots' x *Z. Titanic* 'Anlee'



Liparis reflexa